



# THE FRIENDS OF BRAESIDE PARK NEWSLETTER

## Contents

|                            |    |
|----------------------------|----|
| Presidents Report          | 2  |
| Editor's Note              | 3  |
| Park Activities            | 3  |
| Park Report                | 7  |
| Ernies 'A Team' Activities | 8  |
| Community Open Day         | 9  |
| Night Walks                | 10 |
| Activity Calendar          | 11 |



### Braeside Park

470 Lower Dandenong Road,  
Braeside 3195  
Melway Map 88 D8  
Phone: 8427 2027

The Friends are seeking to reduce postage costs.  
If you would like your newsletters emailed then  
please send your email details to  
[braesideparkfriends@gmail.com](mailto:braesideparkfriends@gmail.com)

*The opinions expressed in this newsletter are the authors' and  
do not necessarily reflect those of Parks Victoria or its staff.*



## President's Report

*By Judith Sise*

It's March and those damn Easter Bunnies are still rampant.

Ranger Team Leader, Des Lucas, reported that Rabbits per light kilometre were slightly, ever so lightly down from December's high of 68 to March's 64.5! Maybe the 3.5 are out delivering Easter Eggs! Seriously, those pesky rabbits combined with the lack of rain for nearly the last 40 days have totally denuded large areas. And the ponds are sadly just mud puddles. Ranger Janelle and other staff are watering the Cypress trees so we don't lose them in the present drought. Rain is desperately needed, and lots of it. North Queensland could spare a little I think!

Frank and Helen organised and fed 70 Clean Up Australian volunteers on Sunday 4<sup>th</sup> March and they left the Park shiny clean! Thank you, Frank, Helen and all those volunteers!

Wouldn't it be wonderful if they never had to clean up again!

Margaret, Secretary, has the Friend's Nocturnal Walks up and running on Park Victoria's Parks Connect program and Frank, Web Master, has posted the dates (first Friday of month from April to September) on the Website. There are a few registered already.

Walking recently in Coomoora Woodlands in Springvale South, I kept getting whiffs of smoke and when I rounded the corner there was a fire engine and three large firemen watering down some blackened bush. They had three calls around midnight reporting flames 3-5 metres high after some arsonists had lit fires in the bottom of the woodlands. Braeside Park has had a few near misses with some local fires near the Park, in the waterways and Keysborough. That rain is really needed for this reason too!

A small sub-committee is meeting to re-invigorate the Visitor's Centre and they have made a good start with cleaning down the outside walls. More is planned which I am sure we will all welcome.

The Annual General Meeting is coming up in early August so it is time to think if you are able to join the small but friendly committee, because the more who come on board, the better the ideas that can be harvested to improve and to conserve our very dry Park.

The Mordialloc By-Pass is looming high on the horizon and Margaret and I have written submissions to become part of the Reference Group. The Environmental Report should be out in early March. At the March Friend's Meeting, Alex Breskin (Secretary, Residents Against the Mordialloc Freeway) and Cr Rosemary West (OAM City of Kingston) were interested in finding if the Friend's Group had some specialist's experts who make be useful in informing the Vic Roads committee and state government of how much the By-Pass will impact on the Park.

As I walked in Fotheringham Reserve near East Link in Dandenong, I found the sound of the traffic on Sunday at 9:05 am shockingly LOUD. It totally blocked out all birds' songs except the very raucous Wattle bird! Is this what we can expect in Braeside Park once the By-Pass is completed? I walked at 7 am in Braeside Park, the same Sunday and heard only birds' songs small and large, and one plane flying over, and of course the chatting of the early morning walkers.

There are so many unknown factors to the building of the By-Pass which will only rear their heads AFTER it's completed and I suspect that nothing will be done to alleviate these problems as they come to light. Hopefully, being on the Reference Committee may help to investigate solutions to the known problems before the completion or even commencement!

## Editor's Note

As mentioned by the President, Many of the ponds were in a sad state without the late Feb, early March rains.



*Photos by David MacLean*

The wetlands fared better, but were not up to their usual majestic splendour. Fortunately, since these pictures were taken, some rain has fallen and it has made a significant difference.

## Park Activities

### **Parks Victoria Park Connect portal – invitation to join**

Parks Victoria, are using in 2018 an on-line portal (website) to register Friends events and activities throughout Victoria with on-line registration to access events (<https://www.parkconnect.vic.gov.au> ). This includes offers of volunteer involvement and activities in all Parks Victoria groups throughout Victoria. Including Ballarat, Mornington Peninsula, Gippsland and south-east Melbourne. Once registered with friends of Braeside park site (free) you can see all our activities in our activity calendar, book into them and learn about Braeside Park and its unique environment.

The Friends when they hold special activities are able to notify all members about what we are running, including Moth nights, Mystery walks, and other activities. While these are also on our website, all events will be recorded on this site by the group leader, Margaret Hunter so these are marketed to the wider community.

I would encourage you to join this site and become a Park Connect member to partake in all activities including camp ground hosts, Sherpa walks, weeding at devils Bend, plover watching, and other activities. This assists the friends to market and promote our programs on-line to a wider audience and give more community members the opportunities to take part in these activities, and perhaps become more involved in the Friends in the future.

If you require more information, please contact Margaret Hunter on the contact details in this newsletter.

*Margaret Hunter*



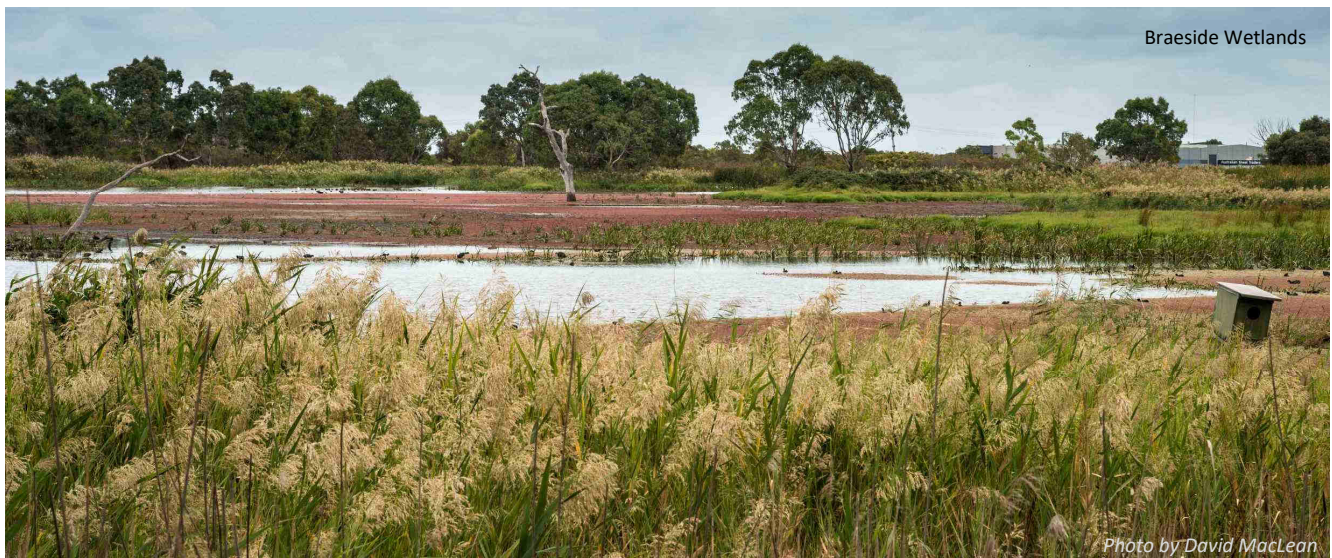
## Park Activities (cont.)

### World Wetlands Day Celebrations 2018

By **Margaret Hunter**

Every year around the 2<sup>nd</sup> of February, there is a range of celebrations for World Wetlands Day to celebrate the important qualities of wetlands and their role as valued environmental areas. In 2018 the theme is Urban Wetlands: Prized land, not wasteland. Melbourne Water held an open day at the Edithvale-Seaford wetlands Education Centre in Edithvale Road, with a working display of their stormwater model and presentations on constructed wetlands (Braeside being an example, 1984), and their important role in stormwater control and sustainability.

Apart from this they provide an important role in storing water in times of flood, providing for many of the migratory birds that visit the nearby Edithvale- Seaford Wetlands. The Braeside wetlands, at the Governor Road end of the park, have a viewing platform (featured in the last newsletter), and a bird hide with the opportunity to view the birds in their natural environment.



We also learnt about nearby constructed wetlands in the Epsom Racecourse estate, Mordialloc, Clayton and also of others nearby including Waterways, and Woodlands Industrial Estate adjacent to Braeside Park.

The major role of these are to reduce flooding, replenish drinking water, filter waste and improve water quality (several levels of ponds) promote human wellbeing (a wonderful environment to sit and watch all kinds of ducks etc.) and appreciate a sustainable natural environment. A visit to some of these nearby wetlands leads to a greater appreciation of the waterways in Braeside and their important role in the local environment.

The Edithvale-Seaford Wetlands Education Centre is open on Sunday afternoons from 1.00 to 5.00 and other times by appointment.

Please contact Margaret for further information.

## Park Activities (cont.)



### Clean Up Australia Day @ Braeside Park 2018

We met at around 10am at the Visitor's Centre on Sunday March 4<sup>th</sup>. Around 70 volunteers mostly from 27 Kingswood Primary families and 6 staff and as well as some local residents registered. They were then assigned designated areas to look after. Most groups were asked to look after a car park area and then an area along the fence line of Lower Dandenong Road. There was quite a significant amount of rubbish collected during the 2 hour clean up especially along the fence line which seems to be blown in from the road or dumped inside the fence line. Disappointingly there was a lot of empty cans and bottles as well as fast food containers as well as the usual napkins and tissues. There were some unusual items such as car bumper bars complete with registration plate, trailer parts, tyres and a lot of cardboard. This was followed by a morning tea consisting of tea or coffee, cordial, biscuits and even some fresh fruit for the kids.

Overall a very successful day with the Park now looking beautiful and clean and there were lots of people using the Park to ride, walk, run and play later that afternoon on a perfect day. Life can't get any better, as long as everyone continues to take home their rubbish today otherwise all our hard work will be undone. A big thank you to my wonderful wife Helen Russo who helped everyone sign in and out and then later made sure everyone had a drink and something to eat.

Frank Russo

Clean Up Australia Site Co-ordinator

Webmaster of [www.braesideparkfriends.org.au](http://www.braesideparkfriends.org.au)





## Park Activities (cont.)

### The 'famous' Friends of Braeside Park night walks

By **Margaret Hunter**

It's that time again to talk about the Friends night walk program for 2018.

The Night walks are provided by the Friends free of charge to the community. Participants meet at the Visitors Centre Car park at 7.00 pm sharp. They run on the first Friday of the month from 7.00 pm to around 8.30 pm, with an attendance of over 250 people in 2017. It is important to book early as numbers are restricted to 20 per walk.

Bookings are available in several formats:

- on-line Park Connect (Parks Victoria volunteer/event portal for 2018,
  - email to Friends email in this newsletter,
- by phone/text to Margaret Hunter on 0417 323 460).

We always book out quickly, with late bookings put on a waiting list for the next walk, large groups are often accommodated with special bookings eg cubs, scouts, guides and other groups. We use Red Light torches to spot the animals of the park, that come out after twilight and include Sulphur crested cockatoos, foxes, possums, rabbits, bats, eels, purple swamp hens, ducks and other nocturnal animals of Braeside Park.

If you are interested you can book ahead for future months, with many frequent return attendees, who come back each year as they enjoy it so much. Sightings are reported to DELWP for monitoring and research purposes and to Parks Victoria on Park Connect.

We are also always looking for guides, with training provided with further information from Margaret on the contact details above.

I look forward to a successful night program once again in 2018 and welcome you to book into this in the ways described.



Ringtail Possum

Photos by David MacLean



Tawny Frogmouth

## Park Activities (cont.)

### Did you know?

Braeside Park is located at the northern end of the once mighty Carrum -Carrum Swamp that stretched for over 4,000 hectares from Mordialloc to Dandenong and beyond. It is the lower end of the Dandenong Creek catchment, with its source in the Dandenong Ranges.

It was Melbourne's sewage farm for many years, when the historic Cypress trees were planted and there was little on Lower Dandenong Road other than the sewage farm. When the Eastern Treatment plant was built in 1978, it was phased out and became the natural environmental area it is today, valued and treasured by members of the community of south eastern Melbourne as a favoured destination receiving over 500,000 visitors per year.

Further information on Braeside Park can be found on the Kingston Historical website. When the MMBW investigated land use in the 1980s, the land became Braeside Metropolitan Park, now Braeside Park. Early uses were agriculture, horse racing (Phar Lap was stabled here) and golf courses.

More on these uses in the next newsletter.

**Margaret Hunter**

## Park Report

**By Des Lucas**

### Green Army: - Partnership City of Kingston

Removal of approx. 1500 tree guards

Construction of 2 fences

Propagation of 4000 plants

Weed works in the heathland – full search and destroy of passionfruit and completed Targeted Kunzea removal

Seed collection

Planted 500 plants

Mulching

### Men's Shed:

The extension to the Amenity building is complete.

### Pest Animal Program: - Rabbits:

An allocation of 5000 for good neighbour rabbit program for 17/18

Dec 68 – Mar 64.5 rabbits per spot light kilometre.

Some areas throughout the park are totally be denuded from rabbit grazing.

Deakin Uni students have started a program of mapping the parks rabbit warrens – this is now on hold over the summer period and due to recommence in the next few weeks.

## **ERNIE'S "A" TEAM - WEDNESDAYS:**

### **DINGLEY WATER WAY**

Return to the Caterpillar pond to chip out the thistles/weeds & remove guards/frames from the established plants (300+).

### **GRASSLANDS**

Hand weeding around native grasses/plants.

Fence checks for rabbits & more weeding.

Planting of native grasses & herbs X 300 plants.

Check of Orchid site & found an increase of new plants.

Congratulations to Ernie & Wednesday volunteers, as since the inception of this project over 5,300 plantings have occurred.

### **VISITORS CENTRE**

Maintenance of garden, weeding, removal of guards & frames & a little mulching

### **COMMUNITY GARDEN**

Weeding, mulching & general clean up continues

*Join in the activities with Parks Victoria Rangers  
every Wednesday from 9 am - 12 noon*

*- meet at the Park Office*

*- morning tea provided*

*Help is needed for a variety of jobs - everyone most welcome.*

*Wednesday afternoons continue*

*from 1 pm - 2:30 pm in the Nursery & Community Garden.*

*Everyone Most Welcome*

## **Newsletter Contributions**

Thank you to Judith Sise, Margaret Hunter, Bev Bancroft, Frank Russo, Rosemaree MacLean, David MacLean & Park Staff for contributions to this edition.

If you have an item to share in future editions or have any feedback in relation to the newsletter, please contact the editor at  
[braesideparkfriends@gmail.com](mailto:braesideparkfriends@gmail.com)



# Community Open Day



The Friends of Braeside Park invite the community to visit the Community Garden and Nursery Facility.

Take the opportunity to learn about the activities the Friends of Braeside Park are involved in.  
The local native plants, protecting and enhancing our environment and other interesting information.

Light refreshments including tea, coffee and soft drinks.

**Date: Sunday 20<sup>th</sup> May, 2018**

**Time: 10am to 12pm**

**Venue: Community Garden**

Follow the signs after entering the Park from  
Lower Dandenong Road Braeside (Melways Map 88 D8)

**Free BBQ from 11am**

Ongoing activities include, plant sales,  
pricking out seedling plants, friends information displays  
and mounted native animal display.

# Night Walks for 2018



Friends of  
Braeside Park

**The Friends of Braeside Park invite  
you to attend a night walk to view  
nocturnal animals of the park**

**On Friday Nights at 7pm**

**from April thru to September in 2018**

**on the 6<sup>th</sup> April, 4<sup>th</sup> May, 1<sup>st</sup> June,  
6<sup>th</sup> July, 3<sup>rd</sup> August & 7<sup>th</sup> September**

**Meet at Visitors Centre**

**Braeside Park, Lower Dandenong Rd, Braeside**

**Melways Map 88 Reference D8**

**Cost: Gold Coin Donation per person**

**Numbers Limited - Bookings Essential**

**Via email: [braesideparkfriends@gmail.com](mailto:braesideparkfriends@gmail.com)  
or contact Margaret Hunter on 0417323460**

[www.braesideparkfriends.org.au](http://www.braesideparkfriends.org.au) for more info

## Friends of Braeside Park—Activity Calendar

### Weekday Community Project-The A Team:

Every Wednesday with Ranger staff commencing at 9:00 - 12:00 from the Park Office. Activities can include weeding, mowing weeds, mulching, planting, fencing etc.

### Nursery - Plant Propagation:

1st Saturday and 3rd Sunday from 10:00 am to 12:00 Noon and

Every Wednesday 1pm to 3pm

Undertaking a variety of propagation activities.

### Committee Meeting:

2nd Thursday, monthly 7:00 to 9:00pm at the Park Office.

The Committee meets to make decisions about the running of the group.

### Water Quality Monitoring:

3rd Tuesday, monthly 9:00 to 12:00 noon from the Park Office.

Water samples are taken and monitored from the Dingley Waterway and Wetland.

### Bird Observations:

A set bird observation is completed monthly around the main wetland.

Call Ranger Janelle Cadd on (03) 8427 2027 to become part of this program.

### Birds Australia Monitoring Program:

10 bird monitoring transects are monitored in this program with 5 completed one month and the other 5 the next month.

The sessions occur on the 4th Friday of each month from 8:00 am alternating between the following starting locations.

Park Office January, March, May, July, September, November

Robin Car Park February, April, June, August, October, December

### Special Activities:

Night walks are offered from April through to September. Gold Coin Donation.

For details and bookings phone **0417 323 460**

**Community Nursery is Open on the Third Sunday of the Month  
10:00 am to 12:00 noon – Seedlings \$2.00 each.**

### Friends of Braeside Park Inc.

**President:** Judith Sise **Secretary:** Margaret Hunter

**Assistant Secretary:** Rosemaree MacLean **Treasurer:** Bev Bancroft

**Newsletter Editor:** David MacLean **Webmaster:** Frank Russo

**Publicity Officer:** Vacant

**Postal Address:** PO Box 608 Braeside, Vic. 3195 **Phone:** 0417 323 460

**Email:** braesideparkfriends@gmail.com

**Web:** [www.braesideparkfriends.org.au](http://www.braesideparkfriends.org.au)

**ACN:** A 002 4027 B

Join us on Facebook

<https://www.facebook.com/groups/327955807288240/#>

Current Facebook Members = 118



## Friends of Braeside Park Activity Calendar 2018

| Activity   | Time/Day  | Jan   | Feb                 | Mar   | Apr                 | May  | Jun  | Jul   | Aug                           | Sep   | Oct   | Nov                 | Dec                                     |
|--|---|---|---------------------|---|---------------------|--|--|---|-------------------------------|---|---|---------------------|---|
| Committee Meeting  | 7pm - 9pm<br>2nd Thursday at the<br>Park Office | X   | 8                   | 8   | 12                  | 10   | 14   | 12  | 9                             | 13  | 11  | 8                   | 13                                      |
| Community Projects<br>Weekday - "The A<br>Team"                        | 8am - 12pm<br>Wednesday's at the<br>Park Office | -   | 7<br>14<br>21<br>28 | 7<br>14<br>21<br>28   | 4<br>11<br>18<br>25 | 2<br>9<br>16<br>23<br>30                             | 6<br>13<br>20<br>27  | 4<br>11<br>18<br>25                               | 1<br>8<br>15<br>22<br>29      | 5<br>12<br>19<br>26   | 3<br>10<br>17<br>24<br>31   | 7<br>14<br>21<br>28 | 5<br>12                                 |
| Nursery open for plant<br>sales  | 10am - 12pm<br>3rd Sunday                       | 21  | 18                  | 18  | 15                  | 20   | 17   | 15  | 19                            | 16  | 21  | 18                  | 16                                      |
| Plant Propagation<br>Community Nursery                                 | 10am - 12pm<br>1st Saturday &<br>3rd Sunday     | 6<br>21   | 3<br>18             | 3<br>18   | 7<br>22             | 5<br>20  | 2<br>17  | 7<br>22   | 4<br>19                       | 1<br>16   | 6<br>21   | 3<br>18             | 1<br>16                                 |
| Plant Propagation<br>Community Nursery                                 | Wednesday's<br>1pm- 3pm<br>Rev 9551 4578        | X   | X                   | X   | X                   | X  | X  | X   | X                             | X   | X   | X                   | X                                       |
| Water Quality<br>Monitoring<br>Meet at the Park Office                 | 8am - 12pm<br>3rd Tuesday                       | 16  | 20                  | 20  | 17                  | 15   | 19   | 17  | 21                            | 18  | 16  | 20                  | 18                                      |
| Bird Observations  | 8am - 11am<br>4th Friday<br>Park Office         | 26  | *                   | 23  | *                   | 25   | *  | 27  | *                             | 28  | *   | 26                  | *                                       |
| Bird Observations  | 8am - 11am<br>4th Friday<br>Robin Car Park      | *   | 23                  | *   | 27                  | *  | 22   | *   | 24                            | *   | 26  | *                   | 14                                      |
| Nighthawks   | From Visitor's<br>Centre 7pm                    | Nighthawks offered from<br>April through to September.<br>Gold Coin Donation per head<br>Bookings Essential! 0477323450 |                     |   |                     | 6  | 1  | 6   | 3                             | 7   | Nighthawks offered from<br>April through to September.<br>Gold Coin Donation per head<br>Bookings Essential! 0477323450 |                     |   |
| Community Projects<br>Weekends   | 8am - 12pm, follow<br>the signs                 |   |                     |   |                     | Community<br>Nursery Day<br>10am -12pm<br>Sunday 6th | World<br>Environment<br>Day Tree<br>Planting<br>Sunday 3rd           | National Tree<br>Planting Day<br>Saturday<br>28th |                               |   |   |                     |   |
| Special Activities are<br>held throughout the year at<br>various times |   |   |                     | Clear Up<br>Australia Day<br>Sunday 4th<br>Meet at Visitor<br>Centre 10am -<br>12pm |                     |  | Mystery Walk<br>Sunday 17th<br>12.30 - 5.30<br>with afternoon<br>tea |   | AGM<br>Sunday 12th<br>2pm-4pm | Breakfast with<br>Birds 23rd<br>Meet at Red<br>Gum Plunge<br>Area<br>7am - 9.30am | Spring Walk -<br>Heathland &<br>Grasslands<br>Sunday 14th<br>1pm - 3.30pm   |                     | End of Year<br>BBQ<br>Wednesday<br>12th |